

This is going to be three of the most enjoyable days of umpire training available. Your training will include the latest mechanics, rule interpretations, and procedures used in baseball. We will help you adapt these techniques into your personal level of umpiring.



Classroom instruction will include insightful direction in the two man umpire system as well as an overview of three man mechanics.

Your personal plate stance will be evaluated and suggestions will be given to improve your idea of the strike zone.

We feel this is one of the best opportunities to learn from the best. Come join us in an insightful weekend to gain confidence, leadership, and knowledge about umpiring.



Registration Form

Please make all checks and money orders payable to National Umpire Camps. Thank you.

Name _____
Address _____
City _____ State _____ Zip _____
Home Phone _____
Cell Phone _____
E-mail _____
Occupation _____
Age _____ Height _____ Weight _____
T-Shirt _____
Umpiring Experience _____

Tell us how you heard of us _____

Please mail this form along with your \$125 non-refundable deposit to:
National Umpire Camps
C/O John Brammer
526 Ethan Drive
Weatherford, TX 76087

For more information please call
John Brammer
817 / 789-2864 or E-mail
ibrammer4@hotmail.com

2017
North Texas
Umpire Camp
presented by National Umpire Camps

Grapevine, Texas

January 20-22, 2017



In cooperation with:



&
North Texas Sports Officials

**If you are just beginning, average,
or experienced, this is the camp for you!**

- Improve your knowledge and skills in the two-man system, plate work and handling situations
 - Enjoy a weekend with fellow umpires
 - Your camp fee could be tax deductible
- Learn professional based mechanics and rule interpretations

Staff

Chris Griffith-Chief Instructor

Professional Baseball, SEC, Big 12

Chris worked 9 years in professional baseball. He worked the last 4 years in Triple A with Major League Spring Training. He currently works in the SEC and Big 12, but has worked in multiple conferences.

Blake Felix-Instructor

Professional Baseball (AAA)

Blake Felix started umpiring in DFW. He has been a professional umpire for the last 7 years.

Blake is in the Pacific Coast League.

Jon Wolfe-Instructor

Professional Baseball, Big 12, C-USA, Mountain West

Jon spent 4 years in professional baseball. He has been a conference tournament umpire in the Mountain West for multiple years.

John Brammer-Camp Coordinator

Professional Baseball-11 years

Division I-SEC, Big 12, NCAA (D-1) Regional, Tournament Division II JUCO World Series 1999

MSBL World Series 2001

Assignor for Metro Athletic Conference, North Texas Junior College Athletic Conference, Western Junior College Athletic Conference, Southern Collegiate Athletic Conference, & American Southwest Conference

Our staff includes the top professional umpires that are available from the region, with experience ranging from Major League Baseball through the short season rookie league. In addition, we employ the areas top amateur umpires and will include observers from Independent Professional, Collegiate, High School, and Select Leagues. **All our staff have professional experience** including multiple All Star and Championship games. **All Staff are subject to availability.**

CAMP SCHEDULE

Friday, January 20, 2017

5:00 PM- Registration

5:45 PM

6:00 PM- Orientation &

9:00 PM Class work

Saturday, January 21, 2017

9:00 AM- Class, Field, & Cage

4:00 PM

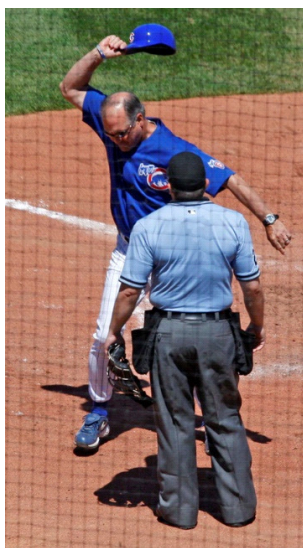
Sunday, January 22, 2017

8:15 AM- Chapel Services (optional)

8:55 AM

9:00 AM- Class, Field, & Cage

3:30 PM



CAMP INFORMATION

LOCATION

Grapevine, TX
Eules, TX

DATES

January 20-22, 2017

CAMP FEES

Tuition to this unbelievable opportunity is \$125 for early enrollment prior to January 18, 2017. Tuition after January 18, 2017 is \$150. Discounts are available for associations that send multiple umpires. A NON-Refundable deposit of \$125 is due with your registration.

UNIFORM and EQUIPMENT

Proper attire is gray umpire pants, black shoes, umpire cap, and a t-shirt. All participants should bring complete umpiring gear for working the plate and bases: mask, chest protector, shin guards, and plate shoes. Warm clothes are advised for our unpredictable Texas weather.